

COBRA5208

Embedded Controller Module

Product Information 1.0: 2009/03/02

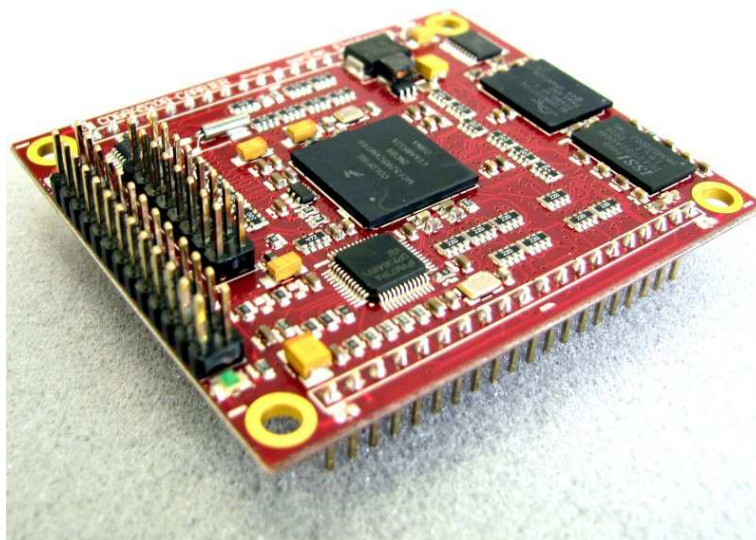
COBRA5208 Features:

- ColdFire® MCF5208 processor
- 166 MHz, up to 159 MIPS
- 8 kByte internal SRAM
- 16 MByte flash (up to 64 MByte)
- 16 MByte SDRAM
- 10/100 Mbit/s Ethernet
- 3x SCI (UART) with handshake
- QSPI and I²C interface
- Real time clock with interrupt
- On-board temperature sensor
- dBUG and uClinux OS support
- 2x connectors 2.54 mm
- Single 3.3 V operating voltage
- Standard BDM interface

The COBRA5208 module is a versatile single board computer based on the MCF5208 ColdFire® processor. COBRA stands for “ColdFire Board for Rapid Applications”.

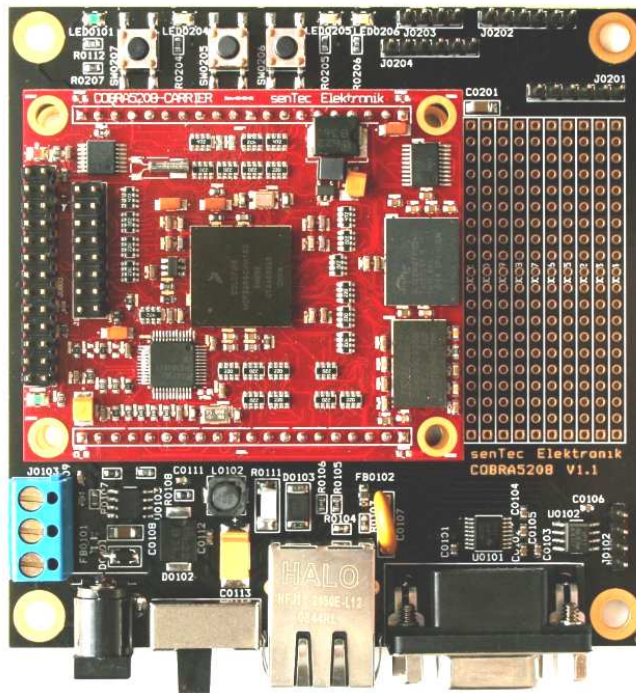
Applications:

- Serial-to-Ethernet interface
- uClinux applications
- Measurement equipment
- Industrial control and automation
- Medical equipment
- Data logging
- Embedded Internet
- Training and seminars



Original size of the module: 68 mm x 54 mm

COBRA5208 Starter Kit with Carrier Board



Optional Upgrades:

Optional support of IEEE 1588 Precision Time Protocol (DP83640 Precision PHYTER populated instead of DP83848I standard industrial PHYTER).
Optionally populated 1 MByte (262,144 x 32) MRAM (magnetoresistive random access memory). MRAM is a nonvolatile memory technology that does not require periodic refreshing and provides an infinite number of write cycles.

© Copyright senTec Elektronik GmbH 2009. All rights reserved.



senTec Elektronik GmbH
Werner-von-Siemens-Str. 6
98693 Ilmenau, Germany
<http://www.sentec-elektronik.de>

Phone: +49 3677 462 486 0
Fax: +49 3677 462 486 6
Email: info@sentec-elektronik.de

senTec Elektronik is a member of the
Freescale Design Alliance Program.



Product status: development finished, product in qualification